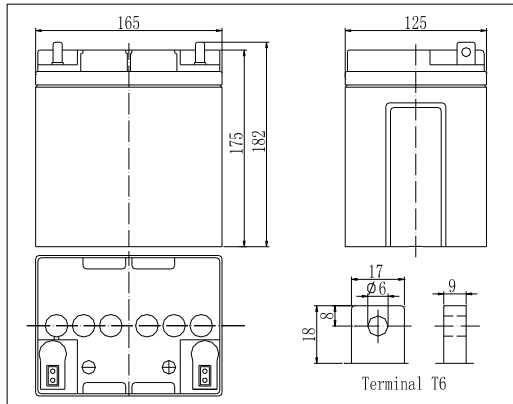
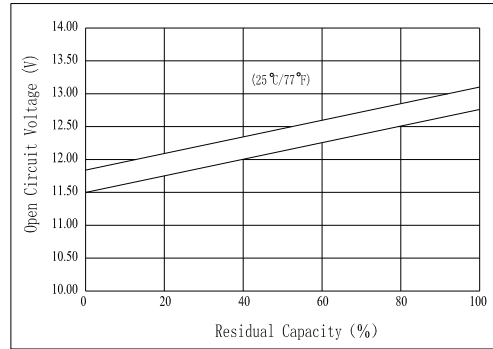


**Dimensions**



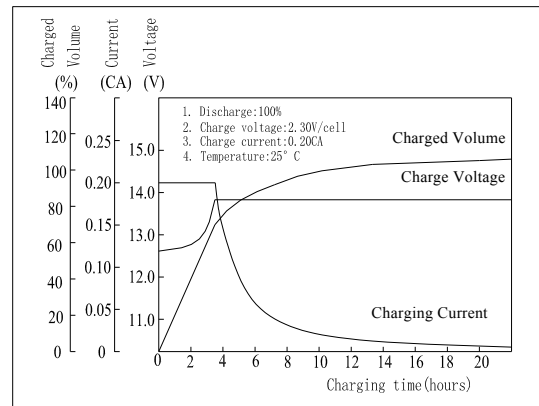
**The Relationship for Open Circuit Voltage and Residual Capacity (25°C)**



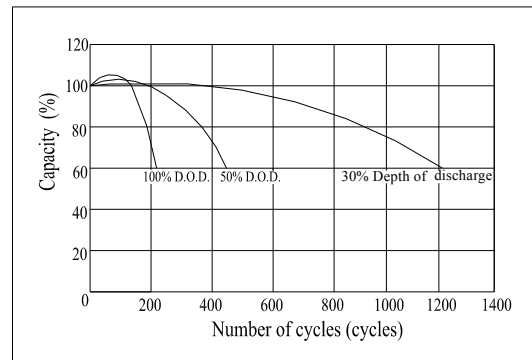
**Specifications**

Nominal Voltage		12 V
Capacity(20HR, 25°C)		28Ah
Dimension	Length	165mm (6.50inch)
	Width	125mm (4.92inch)
	Height	175mm (6.89inch)
	Total Height	182mm (7.17inch)
Approx. Weight		9.5kg (20.9lbs)
Internal resistance (Fully charged, 25°C)		Approx. 11m Ω
Capacity affected by temperature (20HR)	40°C	102%
	25°C	100%
	0°C	85%
	-15°C	65%
Self-discharge (25°C)	3 month	Remaining Capacity: 91%
	6 month	Remaining Capacity: 82%
	12 month	Remaining Capacity: 65%
Nominal operating temperature		25°C ±3°C(77°F ±5°F)
Operating temperature range		-15°C ~50°C (5°F ~122°F )
Float charging voltage(25°C)		13.60 to 13.80V
Cyclic charging voltage(25°C)		14.50 to 14.90V
Maximum charging current		8.4A
Terminal material		Lead
Maximum discharge current		420A(5 sec.)

**Charging Characteristics(25°C)**



**Cycle Life(25°C)**



Note: Floating life at 20°C designed for 3 to 5 years.

- ◆ Absorbent glass mat technology;
- ◆ Recognized by UL & CE;
- ◆ ABS container.

**Constant Current Discharge Characteristics (A, 25°C)**

F.V/TIME	5min	10min	15min	30min	60min	3h	5h	10h	20h
9.60V	112	70.0	52.0	31.0	19.5	7.21	4.92	2.74	1.42
10.2V	106	66.5	49.9	29.8	18.7	7.10	4.85	2.72	1.41
10.8V	100	62.5	47.4	28.3	17.8	6.96	4.75	2.70	1.40

**Constant Power Discharge Characteristics (Watt, 25°C)**

F.V/TIME	5min	10min	15min	30min	60min	3h	5h	10h	20h
9.60V	1250	790	593	355	226	85.6	58.8	32.9	17.1
10.2V	1187	750	569	341	217	84.3	57.9	32.6	16.9
10.8V	1116	705	541	324	206	82.7	56.8	32.6	16.8